

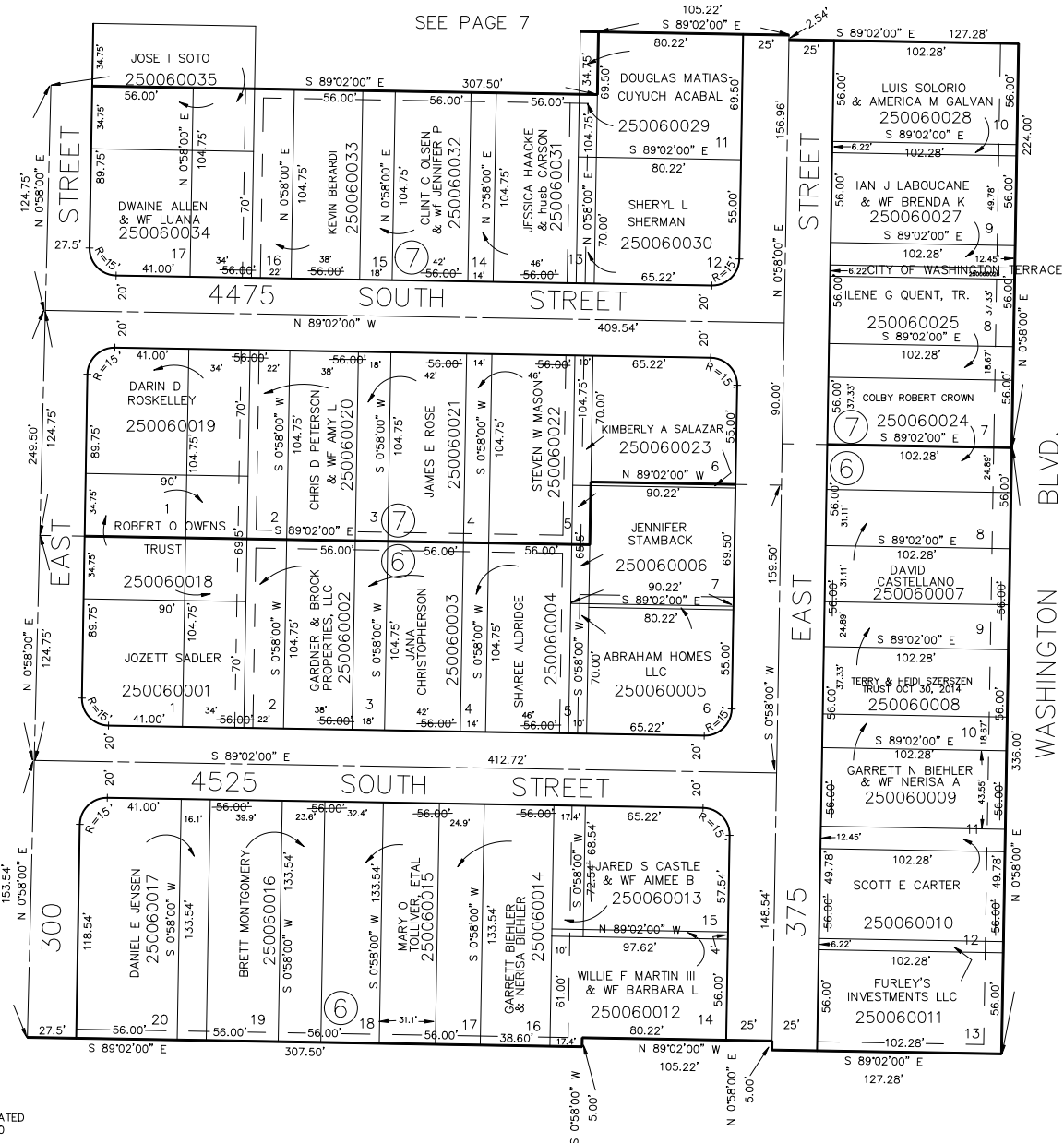
PART OF SECTION 8, T.5N., R.1W., S.L.B. & M.
AMENDED PLAT OF
WASHINGTON TERRACE PARCEL 'A'

BLOCK 6 & 7

IN WASHINGTON TERRACE CITY

SCALE 1" = 50'

TAXING UNIT: 24



SEE PAGE 7

SEE PAGE 5

SEE BOOK
6
PAGE
19

WASHINGTON
BLVD.

OLD EASEMENTS VACATED
9-3-57, 557-240

NEW EASEMENTS
561-146

SEE PAGE 9

5' UTILITY & DRAINAGE EASEMENTS EACH
SIDE OF PROPERTY LINES AS INDICATED
BY DASHED LINES EXCEPT AS OTHERWISE
SHOWN.

FOR COMPLETE ENG DATA SEE
ORIGINAL DEDICATION PLAT IN
BOOK 10, PAGE 77-E OF RECORDS.